

ARTICULATED BOOM LIFTS

IT 100 E - IT 150 E

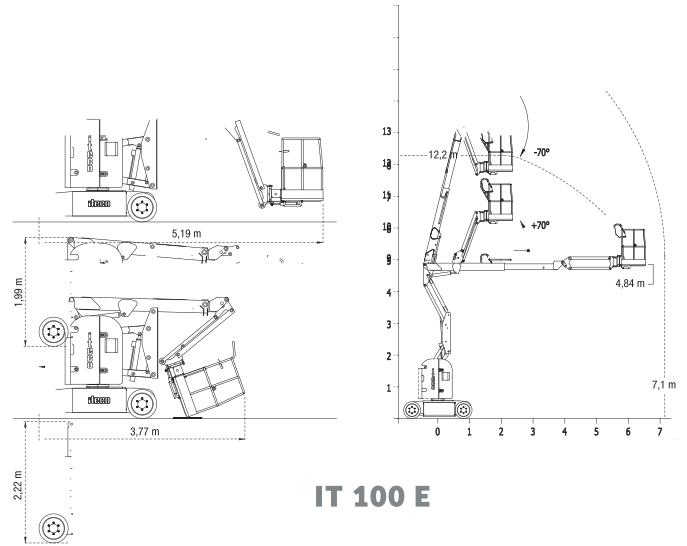
INDOOR AND OUTDOOR USE

STANDARD EQUIPMENT

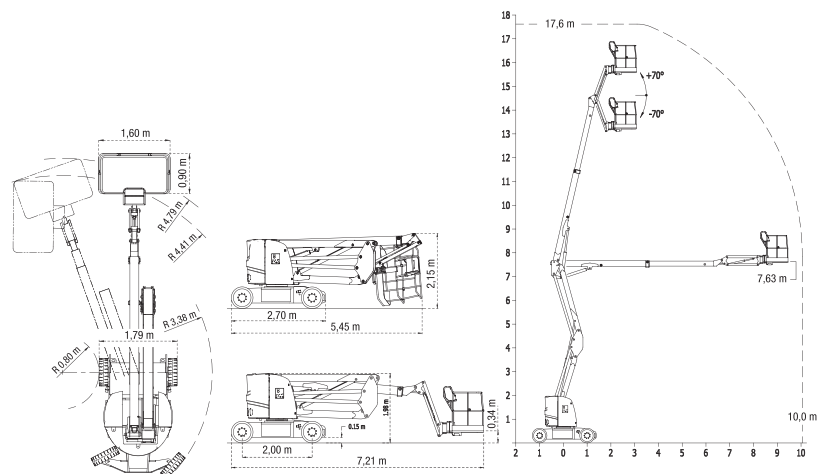
- 2WD Electric traction motor
- Proportional MOSFET controls
- Simultaneous functions control (IT 150 E)
- Parking brakes with hydraulic release
- Mechanical wheel drive release for emergency hauling
- Cushion non marking tires 530 x 175 (IT 100 E), 620 x 200 (IT 150 E)
- Pothole protection (IT 100 E)
- Traction battery 48V (8x6V) - 300Ah (C5)
- Battery charger with automatic switch-off, 48V - 30A
- Battery control system with automatic cut out protection
- Battery centralized refill (IT 100 E)
- Battery disconnection plug
- 355° turret rotation
- Basket automatic levelling
- Basket hydraulic rotation
- Overload sensor on basket
- Inclinometer with motion cut out and alarms
- Cylinder holding valve
- Manual emergency lowering device
- Double controls at basket and ground
- Horn, hour meter and flashing beacons
- 230V cable prearranged up to the basket
- CE – EN280 marking

OPTIONALS

- 230 V cable with plug, socket and safety cut-out
- Working light
- Compressed air line
- Batteries' centralised automatic refilling (IT 150 E)
- Gel batteries



IT 100 E



IT 150 E



Control box IT 150 E



		IT 100 E	IT 150 E
Working height	mm	12200	17600
Basket height	mm	10200	15600
Machine width	mm	1200	1790
Basket dimensions	mm	1170 x 750	15600
Turret rotation		355°	355°
Basket rotation		140°	140°
Basket levelling		automatic	automatic
Capacity	kg	220	220
Controls		proportional with diagnostic	proportional with diagnostic
Tail swing		zero	zero
Battery voltage	V	48	48
Battery capacity	Ah	300 (C5)	300 (C5)
Traction speed	Km/h	4	4
Traction speed (safety)	Km/h	0,6	0,6
Tyres	mm	530 x 175	620 x 220
Total weight	kg	6840	7900
Gradeability		25%	20%
Internal steering radius	m	1,7	0,8
External steering radius	m	3,5	4,79 (4,41)